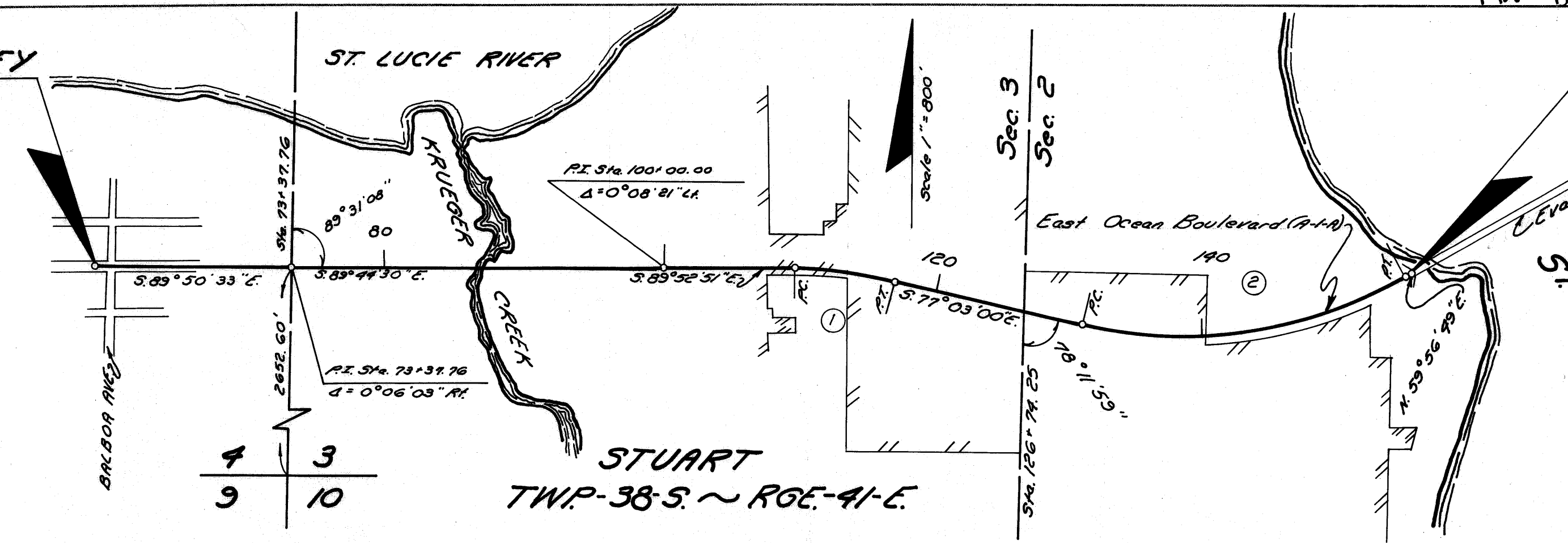


BEGIN SURVEY
Sta. 59+00.00

P.I. Sta. 113+29.96
 $\Delta = 12^{\circ} 49' 51''$ R.
 $D = 1^{\circ} 45' 00''$
 $T = 368.15'$ ①
 $L = 733.19'$
 $R = 3274.17$ (Ch.)
P.C. Sta. 109+61.81
P.T. Sta. 116+95.00

P.I. Sta. 143+91.70
 $\Delta = 43^{\circ} 00' 11''$ L.
 $D = 1^{\circ} 45' 00''$
 $T = 1289.83'$ ②
 $L = 2457.32'$
 $R = 3274.17$ (Ch.)
P.C. Sta. 131+01.87
P.T. Sta. 155+59.19



END SURVEY
Sta. 155+91.74

Pelham
 DEPARTMENT OF TRANSPORTATION
 1314 N. E. 4th Avenue
 FORT LAUDERDALE, FLA. 33304

I, Billy G. Pelham, as Director of Administration of the State of Florida Department of Transportation, do hereby certify that this map is the Official Map of Location and Survey of a portion of Section 89040 designated as a part of State Road A-1-A in Martin County, Florida: Said portion of Section 89040 extending from a point West of Balboa Avenue in the City of Stuart Easterly along East Ocean Boulevard (A-1-A) to Evans Crary Bridge at the St. Lucie River.

Prepared and adopted by the State of Florida Department of Transportation under provisions of Section 335.02, Florida Statutes of 1955.

Billy G. Pelham
Director of Administration
State of Florida Department of Transportation

Attest: Carole Sealan
Executive Secretary

Approved: J. G. Mudd
Engineer of Rights of Way
Date: 2/16/79

Filed for record in the Office of the Clerk of the Circuit Court for the County of Martin, State of Florida, in Plat Book 7, Page 76, on the 27th day of February, A.D. 1979.

File no: 333142
Louis V. Isaac
Clerk of the Circuit Court
Martin County, Florida
By Charlotte Burkley D.C.